



Zion Evangelical Lutheran Church

Connecting with God; Connecting with Others; Connecting others with God

Anne Rankin, Parish Administrator
85 E. Brandt Boulevard
Landisville, PA 17538
(717) 898-2911 (o)
(717) 945-4585 (c)
adminzelc@comcast.net

WeekIE-Newsletter: March 4

COMING UP AT ZION & WITHIN THE WIDER CHURCH

Sunday, March 6

** The altar flowers are sponsored by the Hetricks in celebration of the engagement of Katie Hetrick and Brett Ostwalt.*

** The bulletins are sponsored by Rich Kautter in honor of his two grandsons, Zach and Rowen.*

** The communion elements are sponsored by the Alsedeks in honor of and gratitude for the altar guild and all those who serve in this way.*

In-Person Worship – 9:00 a.m.

Livestream/Recorded Worship – 9:00 a.m.

Link: http://bit.ly/Zion_Live

Adult Sunday School [“The Chosen”] – 10:15 a.m. (Sanctuary)

Wired Word Sunday School – 10:15 a.m. (Zone/Zoom)

Link: <https://us02web.zoom.us/j/2283229266>

Monday, March 7

Comforters – 9 a.m. (Social Room/Kitchen)

Food Pantry – 10 a.m. – 1 p.m.

Property – 7 p.m. (Parlor)

Tuesday, March 8

Bible Study – 9 - 10:30 a.m. (Parlor)

Scouts – 6:30 p.m. (Sunday School Rooms)

Finance – 6:30 p.m.

Wednesday, March 9

Food Pantry – 10 a.m. – 1 p.m.

Lenten Service – 7 p.m.

Thursday, March 10

Community Meal – 5:30 p.m.

Choir – 6:00 p.m.

Friday, March 11

Bridge – 1:00 p.m. (Zone)

Saturday, March 12 – *Turn your clock ahead!*

Lenten Day Apart – 9 a.m. – 3 p.m. (The Wittel Farm)

Sunday, March 13

In-Person Worship – 9:00 a.m.

Livestream/Recorded Worship – 9:00 a.m.

Link: http://bit.ly/Zion_Live

Adult Sunday School [“The Chosen”] – 10:15 a.m. (Sanctuary)

Wired Word Sunday School – 10:15 a.m. (Zone/Zoom)

Link: <https://us02web.zoom.us/j/2283229266>

ANNOUNCEMENTS, UPDATES, & EVENTS



MID-WEEK LENTEN SERVICES

There will be mid-week services on Wednesdays through April 6 at 7 p.m. All are welcome. If you need a ride, contact Judy Traup (717-898-0625)



HOLY WEEK & EASTER WORSHIP

Passion/Palm Sunday: April 10 at 9:00 a.m.

Maundy Thursday: April 14 at 7:00 p.m.

Good Friday: April 15 at 7:00 p.m.

Easter Sunday: April 17 at 9:00 a.m.

LENTEN SERVICE TRANSPORTATION

If you are in need of transportation to any of the mid-week Lenten services (Wednesdays thru April 6), or Holy Week services (listed above), please contact Judy Traup (traup201@comcast.net or 717-898-0625).

LOST AND FOUND

All of these items have been "lost" by someone and "found" in the church building! If any of them are yours, please take them home with you! They are on the shelf across from the coffee table in the front hallway.



MARCH CALENDARS

If you did not get a March events calendar last week, copies are available on the ushers' table and on the window ledge in the back hallway.

FOR COMFORT

There is a collection of handmade items on display across from the mailboxes. They are available for you to give to someone who needs comfort. There are **prayer shawls** of different types, **hats** for women experiencing hair loss because of chemo treatment and **prayer squares** to be carried in a purse or pocket as a reminder of God's love. These articles have all been knit or crocheted by several Women of Zion.



LENTEN DEVOTIONAL BOOKLETS

There are copies of Lenten devotionals on the ushers' table in the Narthex. Help yourself!

OUR DAILY BREAD DEVOTIONAL BOOKLETS

The March-May Our Daily Bread devotionals are available for you to get on the ushers' table in the Narthex.

DOCTOR VISIT TRANSPORTATION NOW AVAILABLE

The Care Ministry is now offering to help anyone needing transportation to/from a doctor's appointment. Please contact Judy Traup (717-898-0625) and she will see that one of our Zion family members will help.

UPCOMING WORKSHOPS THROUGH THE PARISH RESOURCE CENTER



Compassionate Caring

Mar. 17 and 24,
7:00-8:30pm

Led by Lesley Huff, Psy.D.



REMEMBERING GOD'S MERCY

A Lenten Retreat



MAR. 19, 9:00AM-4:00PM

LED BY AMY SHUTT, SPIRITUAL DIRECTOR



Small Groups Panel

Apr 4, 7:00-8:30pm

ANDREA BROWN, GRANDVIEW
JIM GROSSNICKLE-BATTERTON, LITITZ COB
SUSAN GASCHO-COOKE, COMMUNITY MENNONITE

Understanding Trauma

Apr. 21, 7:00-8:30pm

Led by Rob Fennimore



Springtime of Soul

Featuring the Poetry of
Mary Oliver



Apr 30, 9am-3pm

Led by Ellie Stratton, M.Div



For more information about these and other upcoming workshops at the Parish Resource Center, visit: <https://parishresourcecenter.org/events-workshops/workshop-events/>

JOYFUL NOISE

This month the Joyful Noise offering will go to ☺ Day of Smiles ☺. This is an event each year in memory of Erin & Max Nusbaum who were killed tragically in an automobile accident. Her parents collect money and supplies annually to help spread smiles to a variety of local agencies and organizations. Some include women's shelters, nursing homes, and animal rescue outfits.

CARE PACKAGES



Items are still being collected for our older members! Please place donations on the table in the Narthex!

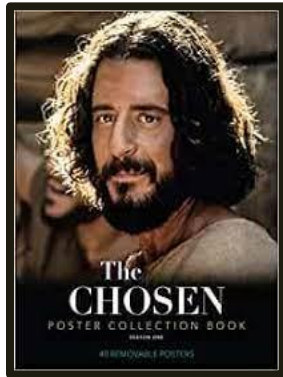
ADULT SUNDAY SCHOOL CLASSES: 10:15 a.m.



...IN THE ZONE & ON ZOOM

This class explores current events and other relevant topics within a biblical and Christian framework. If you are interested in participating in this class via

Zoom, you can sign on anytime after 10:15 at: <https://us02web.zoom.us/j/2283229266>



...IN THE PARLOR

"And a voice came out of the cloud, saying, "This is my Son, my Chosen One; listen to him!"

*THIS SUNDAY, the Sunday Scholars (adult parlor class) will begin the hit television series, **the Chosen**. This will be shown **in the sanctuary after Sunday service**. The Chosen is the widely-acclaimed crowd-funded project depicting the ministry of Jesus Christ as witnessed by his followers. Jesus' words of salvation are taken verbatim from the gospels, but the plot of each episode includes the director's imagination of how the events in the gospel tie together.*

*The first episode will focus on **Mary of Magdala** (Mary Magdalene), one of Jesus' most devoted followers. Come prepared to meet Jesus as you have not seen him before. For those with hearing difficulties, we will use closed captioning with the sound track.*

We invite you to join us in watching this popular Christian series. Running time is approximately 50 minutes, with discussion to follow.



TUESDAY MORNING BIBLE STUDY

All are invited to come to the Tuesday morning Bible Study at 9:00 a.m. The study will follow the lectionary readings in preparation for the upcoming Sunday's lessons. Questions? Contact Millie (717-898-2313).

SCOUTS AT ZION

Zion is so fortunate to be in relationship with Pack 37! We have held the charter for and supported this scout group for many years. In a day and age when extracurricular activities are struggling to get participation and involvement, this scout group is thriving! They hold weekly meetings, mostly at the church, but also out in the community, depending on what they are doing that week and how the weather is!

Check out the boys from the group at their most recent Blue & Gold celebration held in the Social Room.



WINTER EVENTS AT KIRCHENWALD, NAWAKWA, &
THE WITTEL FARM

A LENTEN DAY APART
at The Wittel Farm



Saturday, March 12, 2022
9am - 3pm

Begin your Lenten journey to Easter by
joining us for a day apart.



Casual, comfortable clothing will be appropriate.
A \$15 registration fee covers program and meal costs.

Register at LutheranCamping.org or
call the Camping Office at 717-677-8211 by March 4



The Lutheran Camping Corporation of Central Pennsylvania
Kirchenwald, Nawakwa, and The Wittel Farm
PO Box 459, Arendtsville, PA 17303
717-677-8211 • www.LutheranCamping.org





The Lutheran Camping Corporation presents...

A Spring Quilting Retreat



A gathering of women to share
fellowship and talents.

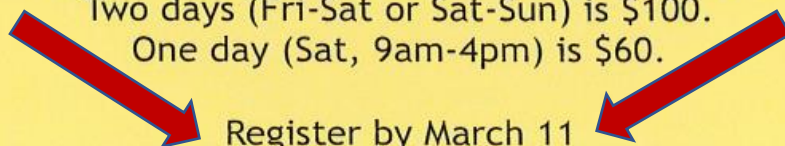
Camp Kirchenwald

Friday, March 18 - Sunday, March 20, 2022

Cost of the full weekend (Fri-Sun) is \$165.

Two days (Fri-Sat or Sat-Sun) is \$100.

One day (Sat, 9am-4pm) is \$60.



Register by March 11

Registration forms are available at
LutheranCamping.org or by calling
the Camping Office at 717-677-8211



The Lutheran Camping Corporation of Central Pennsylvania

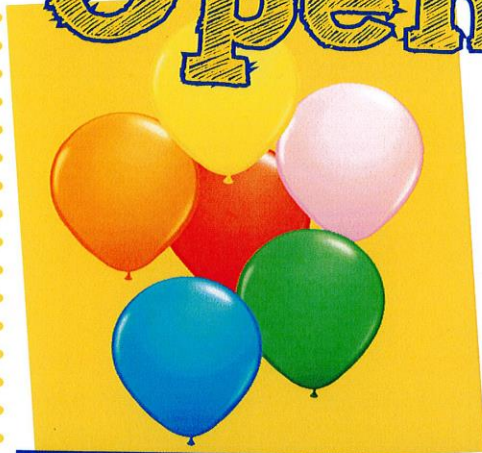
Kirchenwald, Nawakwa, and The Wittel Farm

PO Box 459, Arendtsville, PA 17303

717-677-8211 • www.LutheranCamping.org



Summer Camp Open House



**Summer Camp
Open House at
Kirchenwald &
Nawakwa**

Come join us!!!

- Meet some of the Summer Camp Staff
- Take a tour of camp
- \$10 gift certificate for the camp store to every brand new camper!!

Sunday, March 20

Sunday, April 10

2:00-4:30 pm

Kirchenwald is located on 340 acres of undeveloped timberland, adjacent to 4000 acres of State Game Lands, in Lebanon, Pennsylvania.

Nawakwa is located on 336 acres outside of Arendtsville, in Adams County, Pennsylvania.

For more information, visit www.LutheranCamping.org or call the Camping Office at 717-677-8211.





Earth Day ²⁰²² Celebration

Sunday, April 24, 2022 • 2-6pm
Kirchenwald

Enjoy an afternoon of environmental activities, games, and crafts at one of your favorites places within God's creation: **CAMP! An evening meal is included in the \$15 fee. All ages welcome.**

**RSVP to 717-677-8211 or
LutheranCamping.org by April 16**



The Lutheran Camping Corporation of Central Pennsylvania
Kirchenwald, Nawakwa, and The Wittel Farm
PO Box 459, Arendtsville, PA 17303
717-677-8211 • www.LutheranCamping.org



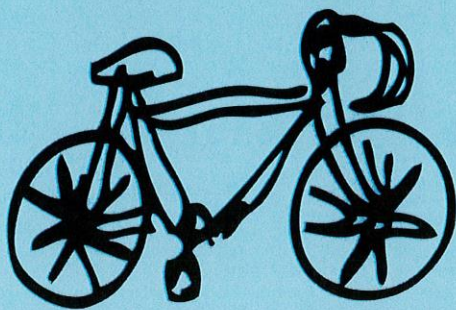
The Lutheran Camping Corporation presents...

Men's Retreat

at Kirchenwald

April 29-30, 2022

Need a weekend with the guys? Come on out to Kirchenwald for a retreat that's sure to put hair on your chest. Get your hands dirty with on-site service projects, break a sweat with some athletic competition and bike riding, and join in fellowship and Bible study in a faith-based environment.



The retreat runs from 7pm on Friday until 4pm on Saturday. Participants must be at least 18 years old, or 15 if accompanied by an adult. (It's a great way to spend time with your son/grandson/nephew, etc!)

Registration is \$85 for the retreat.
Please register by April 22.

Register at LutheranCamping.org or
by calling the Camping Office
717-677-8211



The Lutheran Camping Corporation of Central Pennsylvania
Kirchenwald, Nawakwa, and The Wittel Farm
PO Box 459, Arendtsville, PA 17303
717-677-8211 • www.LutheranCamping.org



PRAYER LIST

FOR HEALING

Connie Alsedek
Dolly Overly
Doug Grow
Marvin Ruch
Kate Donnan
Barbara Williams
Don Heartter
Joe Adams
Judie Ingersoll
Bill Grove
Kay Crawford
Holly Hoover
Sam King
Mary Zimmerman
Janet & Harry Musselman
Lori Weber (Daughter of Dolly Overly)
Loma Slike (Mother of Sue Wise)
Bobbi (Friend of a member)
William Hartman (Father of Deb Grube)
Skipper Mann (Sister of Dolly Overly)
Meghan Frey (Friend of the congregation)
Ashley LaFata & Mike Walker (Bill & Julia Grove's Granddaughter & Husband)
Homer Dietz (Brother-in-law of Harry Musselman)
Mike LaFata (Son-in-law of Bill & Julia Grove)

FOR COMFORT, PEACE, STRENGTH, & SAFETY

Ruth Burkett (Mother of Deb Long)
Family & Friends of Joanne Grim
Thelma Pearson
Lucy Davis
Betty Stoner
Arlene Miller
Deb McCartney
George Potts
Richard & Marilyn Heim
Jess, Matt, & Grant Barcaro
Ed & Dotty Sites (Parents of Cathy Benedict)
Arlene Wise (Sister-in-law of Dave Wise)
Vaun Hile (Father of Lynda Sherwood)
Jennifer Kready (Daughter of Dave & Donna Dumeyer)

FOR PROTECTION

Evan Benedict	Christopher Wright	Chris Andrew		
Thom Whitesel	Ryan Stitzel	Doug Kautter		
Justin Gorlaski	Tyler Duke (Great Grandson of Jan Reeves)			
Jared Shiner (Grandson of Diane Gerlach)				
Corey Landis (Nephew of Jesse & Pat Landis)				
David Adams (Son-in-law of John & Kathleen Hay, and husband of Liz)				

IN CELEBRATION & REMEMBRANCE

HAPPY BIRTHDAY!

7th -- John Hay, Jay Smith
8th - Darrell Gerke
13th -- Sofia Deibler

CONDOLENCES to the Grube family as they grieve the death of Gloria on Saturday, February 26.

Jackie Fetter

2521 Heidelberg Ave.
Newmanstown, PA 17073

June Robinson

616 Wetmore Ave.
Everett, WA 98201

James Grube

1533 Wheatfield Vista
Landisville, PA 17538

Jere Grube

647 Champ Blvd.
Manheim, PA 17545

MINISTRY LEADERS

Ministers
Interim Pastor
Music Director
Parish Administrator
Worship Technology Assistant
Lay Ministry Assistant
Council President
Council Vice President
Sextons

Members of the Congregation
Rev. Melody Sell
John Landis
Anne Rankin
David Albin
Diane Gerlach
Adele King
Dave Dumeyer
Brian Bourassa (a.m.)
Tom Miller (p.m.)

WORSHIP, SUNDAY SCHOOL, & CONTACT INFORMATION

Worship
Lenten Services thru 4/6
Maundy Thursday Worship
Good Friday Worship
Livestream & Recorded Link for all services
Box Office Bible Study Class (Parlor)
Wired Word Class (Zone & Zoom)

Sundays @ 9:00 a.m.
Wednesdays @ 7:00 p.m.
4/14 @ 7:00 p.m.
4/15 @ 7:00 p.m.
http://bit.ly/Zion_Live
Sundays @ 10:15 a.m.
Sundays @ 10:15 a.m.
<https://us02web.zoom.us/j/2283229266>

Church Office
Pastor
Parish Administrator
Council President
Office Email
Pastor Email
Council President Email
Music Director mail
Website
Facebook
Church Address
Office Address

717-898-2911
570-916-8835
717-945-4585
610-247-1497
adminzelc@comcast.net
prmsell2@ptd.net
adelel3@aol.com
zionlandisvillemusic@gmail.com
www.zionhempfield.net
Zion Lutheran Hempfield
85 E. Brandt Blvd. Landisville, PA 17538
75 E. Brandt Blvd. Landisville, PA 17538